



www.colefabrics.com

Double Sided Woven Edge



Zest 725 & Storm 625 are also in the range

Zest 725



Available in 10mm, 15mm, 25mm.

Widths with extended lead times  
Approx 4-5 weeks 5mm, 7mm, 12mm  
20mm, 38mm, 50mm.

Storm 625



Available in 10mm, 15mm, 25mm.

Widths with extended lead times  
Approx 4-5 weeks 5mm, 7mm, 12mm  
20mm, 38mm, 50mm.



# 638 Double Sided Woven Edge

White 910



Available in 5mm, 7mm, 10mm, 12mm  
15mm, 20mm, 25mm, 38mm, 50mm.

Bridal 101



Available in 5mm, 7mm, 10mm, 15mm  
25mm, 38mm, 50mm.

Widths with extended lead times  
Approx 2-3 weeks 12mm, 20mm.

Oyster 135



Available in 10mm, 15mm, 25mm.

Widths with extended lead times  
Approx 4-5 weeks 5mm, 7mm, 12mm  
20mm, 38mm, 50mm.

Cream 130



Available in 5mm, 7mm, 10mm, 15mm  
25mm, 38mm, 50mm.

Widths with extended lead times  
Approx 2-3 weeks 12mm, 20mm.

Cucumber 723



Check with Customer Service for  
Availability

Item can be dyed to order  
MOQ 5,000 Metres

Melba 320



Available in 10mm, 15mm, 25mm.

Widths with extended lead times  
Approx 4-5 weeks 5mm, 7mm, 12mm  
20mm, 38mm, 50mm.

Jasmine 210



Available in 10mm, 15mm, 25mm.

Widths with extended lead times  
Approx 4-5 weeks 5mm, 7mm, 12mm  
20mm, 38mm, 50mm.

Tuscan 240



Available in 5mm, 7mm, 10mm, 15mm  
25mm, 38mm, 50mm.

Widths with extended lead times  
Approx 2-3 weeks 12mm, 20mm.

Sunflower 270



Available in 5mm, 7mm, 10mm, 15mm  
25mm, 38mm, 50mm.

Widths with extended lead times  
Approx 2-3 weeks 12mm, 20mm.

Camisole 430



Available in 5mm, 7mm, 10mm, 15mm  
25mm, 38mm, 50mm.

Widths with extended lead times  
Approx 2-3 weeks 12mm, 20mm.

Babe 440



Available in 10mm, 15mm, 25mm.

Widths with extended lead times  
Approx 4-5 weeks 5mm, 7mm, 12mm  
20mm, 38mm, 50mm.

Rosa 450



Available in 10mm, 15mm, 25mm.

Widths with extended lead times  
Approx 4-5 weeks 5mm, 7mm, 12mm  
20mm, 38mm, 50mm.



Stock Items, quicker dye lead-times.



Limited widths in stock, longer dye lead-times.

# 638 Double Sided Woven Edge

Lipstick 460



**Available in 10mm, 15mm, 25mm.**

Widths with extended lead times  
Approx 4-5 weeks 5mm, 7mm, 12mm  
20mm, 38mm, 50mm.

Beauty 480



**Available in 5mm, 7mm, 10mm, 15mm  
25mm, 38mm, 50mm.**

Widths with extended lead times  
Approx 2-3 weeks 12mm, 20mm.

Paris Pink 470



**Available in 10mm, 15mm, 25mm.**

Widths with extended lead times  
Approx 4-5 weeks 5mm, 7mm, 12mm  
20mm, 38mm, 50mm.

Scarlet 850



**Available in 5mm, 7mm, 10mm, 15mm  
25mm, 38mm, 50mm.**

Widths with extended lead times  
Approx 2-3 weeks 12mm, 20mm.

Cranberry 880



**Available in 10mm, 15mm, 25mm.**

Widths with extended lead times  
Approx 4-5 weeks 5mm, 7mm, 12mm  
20mm, 38mm, 50mm.

Merlot 860



**Available in 10mm, 15mm, 25mm.**

Widths with extended lead times  
Approx 4-5 weeks 5mm, 7mm, 12mm  
20mm, 38mm, 50mm.

Claret 870



**Available in 5mm, 7mm, 10mm, 15mm  
25mm, 38mm, 50mm.**

Widths with extended lead times  
Approx 2-3 weeks 12mm, 20mm.

Serenade 490



Check with Customer Service for  
Availability

Item can be dyed to order  
MOQ 5,000 Metres

Passion 840



**Available in 5mm, 7mm, 10mm, 15mm  
25mm, 38mm, 50mm.**

Widths with extended lead times  
Approx 2-3 weeks 12mm, 20mm.

Fizz 835



**Available in 10mm, 15mm, 25mm.**

Widths with extended lead times  
Approx 4-5 weeks 5mm, 7mm, 12mm  
20mm, 38mm, 50mm.

Blaze 830



Check with Customer Service for  
Availability

Item can be dyed to order  
MOQ 5,000 Metres

Tango 340



**Available in 5mm, 7mm, 10mm, 15mm  
25mm, 38mm, 50mm.**

Widths with extended lead times  
Approx 2-3 weeks 12mm, 20mm.



Stock Items, quicker dye lead-times.



Limited widths in stock, longer dye lead-times.



# 638 Double Sided Woven Edge

Rose Gold 330



**Available in 10mm, 15mm, 25mm.**

Widths with extended lead times  
Approx 4-5 weeks 5mm, 7mm, 12mm  
20mm, 38mm, 50mm.

**Sand Dune 150**



**Available in 5mm, 7mm, 10mm, 15mm  
25mm, 38mm, 50mm.**

Widths with extended lead times  
Approx 2-3 weeks 12mm, 20mm.

Gold Leaf 160



**Available in 10mm, 15mm, 25mm.**

Widths with extended lead times  
Approx 4-5 weeks 5mm, 7mm, 12mm  
20mm, 38mm, 50mm.

Saddle 360



**Available in 10mm, 15mm, 25mm.**

Widths with extended lead times  
Approx 4-5 weeks 5mm, 7mm, 12mm  
20mm, 38mm, 50mm.

Chestnut 370



Check with Customer Service for  
Availability

Item can be dyed to order  
MOQ 5,000 Metres

Cocoa 165



**Available in 10mm, 15mm, 25mm.**

Widths with extended lead times  
Approx 4-5 weeks 5mm, 7mm, 12mm  
20mm, 38mm, 50mm.

Nutcracker 170



Check with Customer Service for  
Availability

Item can be dyed to order  
MOQ 5,000 Metres

**Espresso 180**



**Available in 5mm, 7mm, 10mm, 15mm  
25mm, 38mm, 50mm.**

Widths with extended lead times  
Approx 2-3 weeks 12mm, 20mm.

Heather 555



Check with Customer Service for  
Availability

Item can be dyed to order  
MOQ 5,000 Metres

Thistle 540



**Available in 10mm, 15mm, 25mm.**

Widths with extended lead times  
Approx 4-5 weeks 5mm, 7mm, 12mm  
20mm, 38mm, 50mm.

Mystic 550



Check with Customer Service for  
Availability

Item can be dyed to order  
MOQ 5,000 Metres

**Damson 570**



**Available in 5mm, 7mm, 10mm, 15mm  
25mm, 38mm, 50mm.**

Widths with extended lead times  
Approx 2-3 weeks 12mm, 20mm.



Stock Items, quicker dye lead-times.



Limited widths in stock, longer dye lead-times.

# 638 Double Sided Woven Edge

**Denim 620**



**Available in 5mm, 7mm, 10mm, 15mm 25mm, 38mm, 50mm.**

Widths with extended lead times  
Approx 2-3 weeks 12mm, 20mm.

**Monaco 645**



**Available in 10mm, 15mm, 25mm.**

Widths with extended lead times  
Approx 4-5 weeks 5mm, 7mm, 12mm  
20mm, 38mm, 50mm.

**Ink 650**



**Available in 5mm, 7mm, 10mm, 15mm 25mm, 38mm, 50mm.**

Widths with extended lead times  
Approx 2-3 weeks 12mm, 20mm.

**Navy 680**



**Available in 5mm, 7mm, 10mm, 15mm 25mm, 38mm, 50mm.**

Widths with extended lead times  
Approx 2-3 weeks 12mm, 20mm.

**Regal 590**



**Available in 5mm, 7mm, 10mm, 15mm 25mm, 38mm, 50mm.**

Widths with extended lead times  
Approx 2-3 weeks 12mm, 20mm.

**Ice 610**



**Available in 5mm, 7mm, 10mm, 15mm 25mm, 38mm, 50mm.**

Widths with extended lead times  
Approx 2-3 weeks 12mm, 20mm.

**Angel Blue 705**



Discontinued  
Some Stock  
Remaining  
Order over 5000m only

Check with Customer Service for  
Availability

Item can be dyed to order  
MOQ 5,000 Metres

**Kingfisher 635**



**Available in 10mm, 15mm, 25mm.**

Widths with extended lead times  
Approx 4-5 weeks 5mm, 7mm, 12mm  
20mm, 38mm, 50mm.

**Fathom 715**



**Available in 10mm, 15mm, 25mm.**

Widths with extended lead times  
Approx 4-5 weeks 5mm, 7mm, 12mm  
20mm, 38mm, 50mm.

**Ocean 710**



**Available in 10mm, 15mm, 25mm.**

Widths with extended lead times  
Approx 4-5 weeks 5mm, 7mm, 12mm  
20mm, 38mm, 50mm.

**Ivy 730**



**Available in 10mm, 15mm, 25mm.**

Widths with extended lead times  
Approx 4-5 weeks 5mm, 7mm, 12mm  
20mm, 38mm, 50mm.

**Grass 770**



**Available in 5mm, 7mm, 10mm, 15mm 25mm, 38mm, 50mm.**

Widths with extended lead times  
Approx 2-3 weeks 12mm, 20mm.



Stock Items, quicker dye lead-times.



Limited widths in stock, longer dye lead-times.

# 638 Double Sided Woven Edge

Kiwi 760



**Available in 10mm, 15mm, 25mm.**

Widths with extended lead times  
Approx 4-5 weeks 5mm, 7mm, 12mm  
20mm, 38mm, 50mm.

Eau De Nil 720



**Available in 10mm, 15mm, 25mm.**

Widths with extended lead times  
Approx 4-5 weeks 5mm, 7mm, 12mm  
20mm, 38mm, 50mm.

Combat 735



Check with Customer Service for Availability

Item can be dyed to order  
MOQ 5,000 Metres

Village Green 750



**Available in 10mm, 15mm, 25mm.**

Widths with extended lead times  
Approx 4-5 weeks 5mm, 7mm, 12mm  
20mm, 38mm, 50mm.

Spruce 785



**Available in 5mm, 7mm, 10mm, 15mm  
25mm, 38mm, 50mm.**

Widths with extended lead times  
Approx 2-3 weeks 12mm, 20mm.

Bonsai 780



**Available in 5mm, 7mm, 10mm, 15mm  
25mm, 38mm, 50mm.**

Widths with extended lead times  
Approx 2-3 weeks 12mm, 20mm.

Silver Coin 920



**Available in 5mm, 7mm, 10mm, 15mm  
25mm, 38mm, 50mm.**

Widths with extended lead times  
Approx 2-3 weeks 12mm, 20mm.

Dolphin 925



Check with Customer Service for Availability

Item can be dyed to order  
MOQ 5,000 Metres

Pebble 950



**Available in 10mm, 15mm, 25mm.**

Widths with extended lead times  
Approx 4-5 weeks 5mm, 7mm, 12mm  
20mm, 38mm, 50mm.

Steel 930



**Available in 10mm, 15mm, 25mm.**

Widths with extended lead times  
Approx 4-5 weeks 5mm, 7mm, 12mm  
20mm, 38mm, 50mm.

Dark Grey 970



**Available in 10mm, 15mm, 25mm.**

Widths with extended lead times  
Approx 4-5 weeks 5mm, 7mm, 12mm  
20mm, 38mm, 50mm.

Black 990



**Available in 5mm, 7mm, 10mm, 15mm  
25mm, 38mm, 50mm.**

Widths with extended lead times  
Approx 2-3 weeks 12mm, 20mm.



Stock Items, quicker dye lead-times.



Limited widths in stock, longer dye lead-times.

STANDARD WIDTHS (mm)

QUALITY NUMBER 638

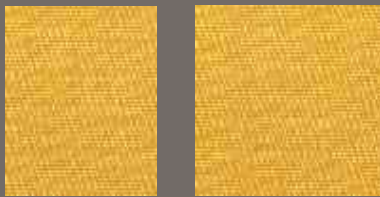
Double Face, Woven Edge,  
Polyester Satin Ribbon



3 5 7 10



12 15



20 25



38



50

QUALITY NUMBER 668/665

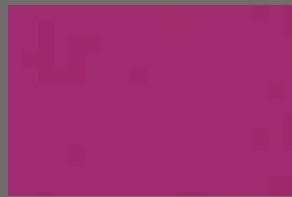
Grosgrain, Woven Edge,  
Polyester Ribbon



10 12 15



20 25



38

QUALITY NUMBER 608

Single Face, Woven Edge,  
Polyester Satin Ribbon



25



38



50

Other widths can be supplied to order.

STANDARD ROLL LENGTHS



500 Metre Spools

- 3mm
- 5mm
- 7mm



250 Metre Rolls

Flat Wound

- 10mm
- 12mm
- 15mm
- 20mm
- 25mm
- 38mm
- 50mm



100 Metre Rolls

(Quality 608 Only)

Flat Wound

- 25mm
- 38mm
- 50mm

Other roll lengths can be supplied to order.

FLANGE OPTIONS



Cardboard Flanges



Crystal Flanges

ADDITIONAL OPTIONS



Cut Pieces



C-CUT

U-CUT WITH STICKY PADS



U-CUT



T-CUT



S-CUT



Other angle cuts available - just let us know what you need.



Printed Ribbon

- Wet ink Rotary Print  
Up to four colours.
- Foil Print  
Up to three colours.
- Transfer Print  
Full colour.
- Premium Raised Print  
Up to two colours.



Special Colours

Special dye to match colours available subject to a minimum order quantity.



## Primary Stock Colours



For 3mm ribbon please go to Swing Ticket Range

### 638 Double Sided Polyester Satin

Available in 5mm, 7mm, 10mm, 15mm, 25mm, 38mm, 50mm.  
Widths with extended lead times: 12mm, 20mm.

### 608 Single Sided Polyester Satin

Available in 25mm, 38mm, 50mm.  
Widths with extended lead times: 12mm, 15mm.

### 668/665 Polyester Grosgrain

Available in 10mm, 15mm, 25mm, 38mm.  
Widths with extended lead times: 12mm, 20mm.

### Over 5000m Orders

Orders of any available width of Primary colours over 5,000m available in 2-3 weeks.

### Under 5000m Orders

Extended lead time widths under 5,000m are available within 3-4 weeks.

### Bespoke Dyed Colours

Only available over 5,000m, require 2-3 weeks to post a sample and a further 3-4 weeks after signed approval is received.

Unders and Overs Policy applies.

## Secondary Stock Colours



### 638 Double Sided Polyester Satin

Available in 10mm, 15mm, 25mm.  
Widths with extended lead times: 12mm, 20mm.  
Not available under 5,000m order: 3mm, 5mm, 7mm, 38mm, 50mm.

### 608 Single Sided Polyester Satin

Available in 25mm, 38mm.  
Not available under 5,000m order: 50mm.

### 668/665 Polyester Grosgrain

Available in 15mm, 25mm.  
Widths with extended lead times: 12mm, 20mm.  
Not available under 5,000m order: 10mm, 38mm

### Over 5000m Orders

Orders of any available width of Secondary colours over 5,000m available in 4 weeks.

### Under 5000m Orders

Extended lead time widths under 5,000m are available within 6 weeks.

### Bespoke Dyed Colours

Only available over 5,000m, require 2-3 weeks to post a sample and a further 3-4 weeks after signed approval is received.

Unders and Overs Policy applies.

## Pack Information 638, 668, 665

Packs of	Widths		Approx Total Pack
4	10mm, 12mm, 15mm, 20mm, 25mm	4x 250m	1000m
2	38mm, 50mm	2x 250m	500m
1	3mm, 5mm, 7mm	1x 500m	500m

## Pack Information 608

Packs of	Widths		Approx Total Pack
5	25mm, 38mm	5x 100m	500m
2	50mm	2x 100m	200m